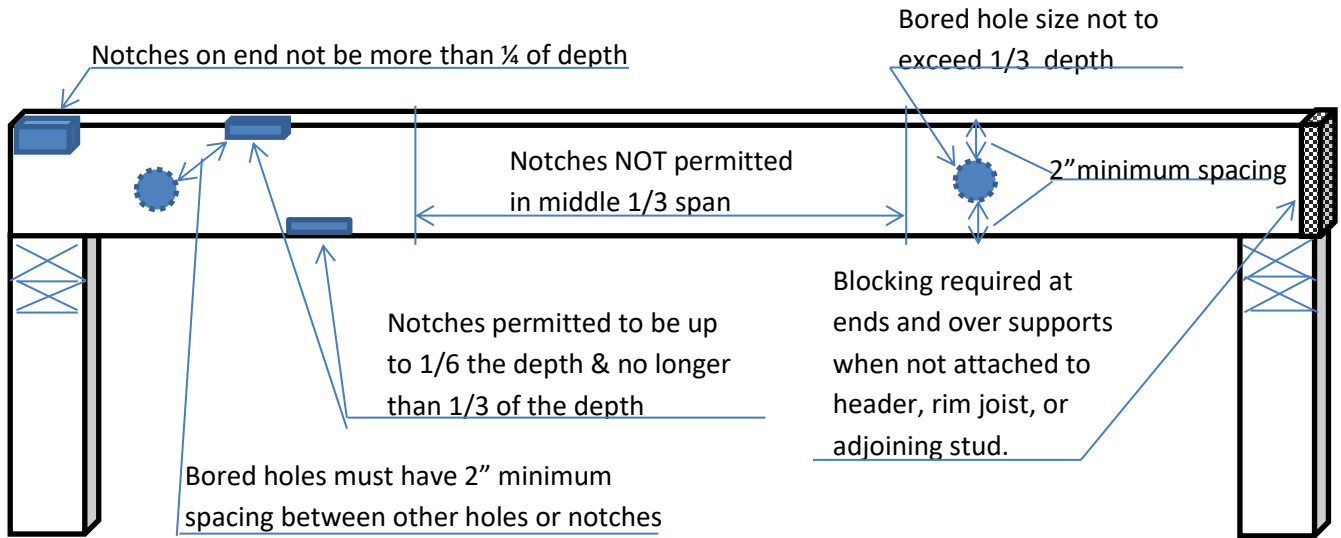
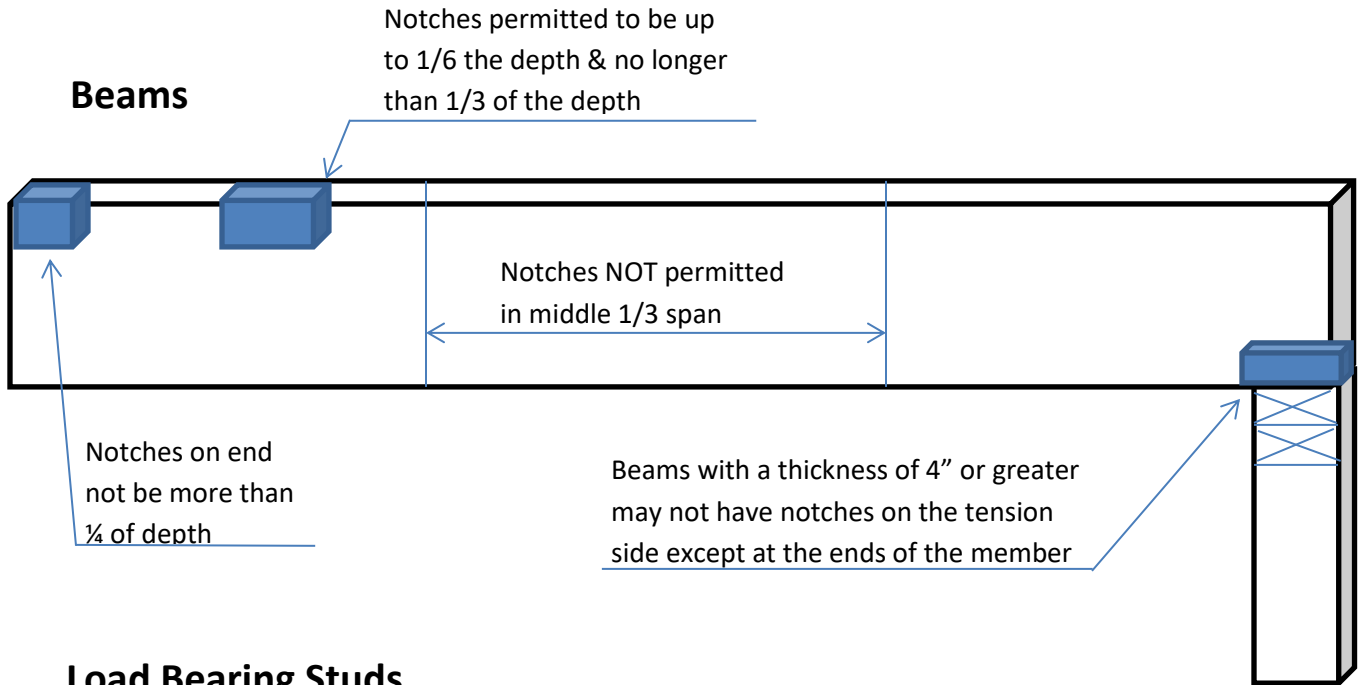


Cutting & Notching of Joists, Beams, Studs, & Rafters

Rafters, Ceiling & Floor Joists – Top Plates: Section R602.6.1 & Figure R602.6.1



Beams

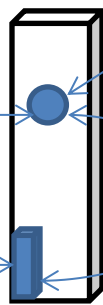


Load Bearing Studs

Non-Load Bearing Studs

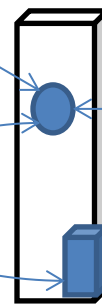
Diameter permitted to be up to 40% of the stud depth
(Diameter may be up to 60% if the stud is doubled in no more than two successive studs)

Notch permitted up to 25% of the stud depth



Must be a minimum of $\frac{5}{8}$ " from the edge of the stud

Bored holes and notches may not be in the same area of the stud



Diameter permitted to be up to 60% of the stud depth

Notch permitted up to 40% of the stud depth