
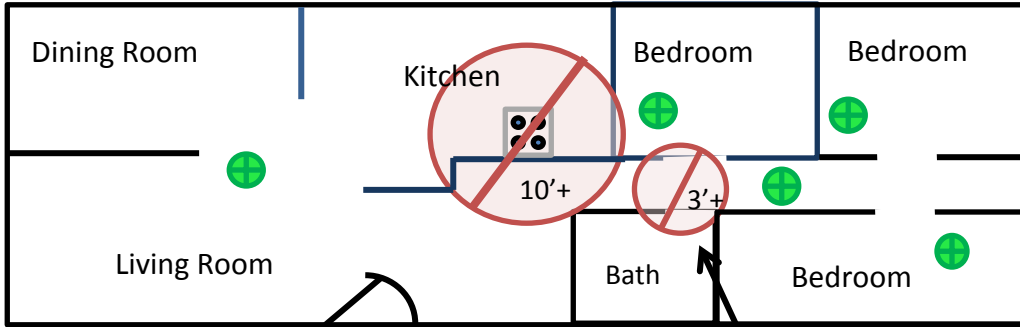


Are there Smoke Detectors in EACH bedroom, in the hallway(s) outside the bedrooms and on each level, including the basement?

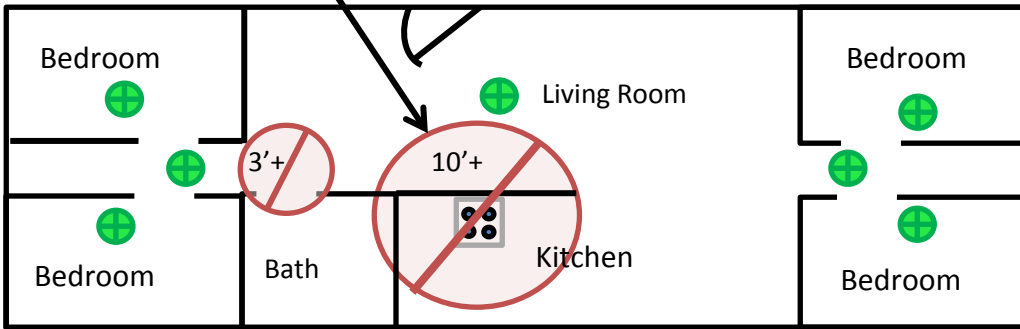
 = Smoke Detector

Single-Story Layout



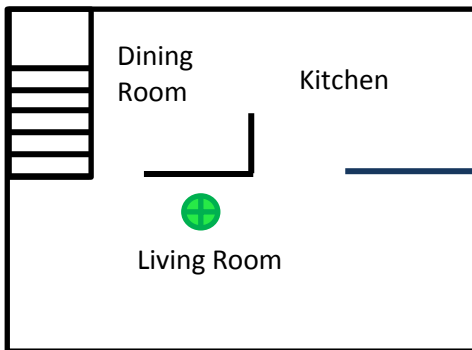
Detectors should be placed **more** than 10 feet from a cooktop/stove

Detectors should also be placed at least 3 feet from the bathroom, unless specially designed to prevent nuisance alarms from steam exposure

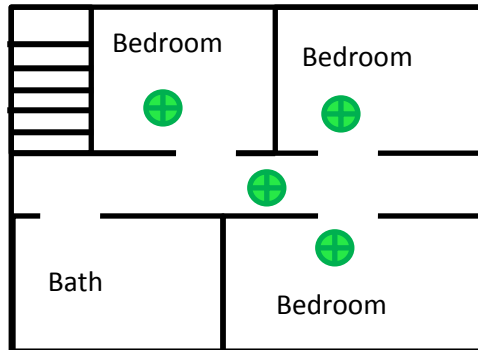


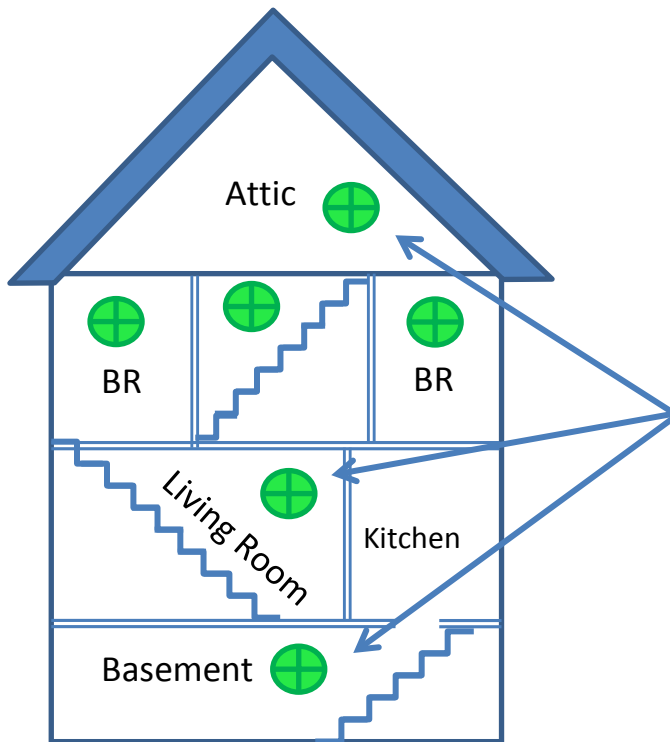
Multi-Story Layout

First Floor



Second Floor





Smoke detectors are required on each level of a dwelling unit (NOT including crawl spaces or uninhabitable attics)

Smoke Detectors *may* be placed on walls, but must be higher than any opening into the room (e.g. doors,windows) and are placed between 4" and 12" from the ceiling.

